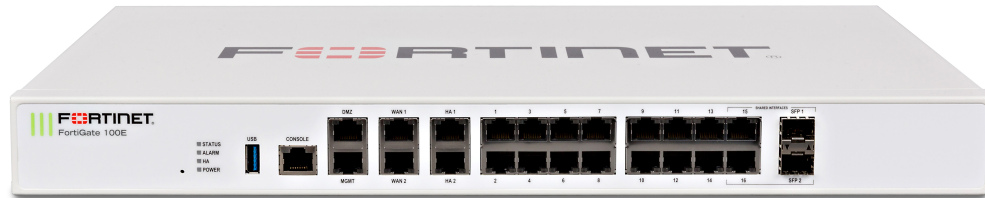


FortiGate® 100E Series

FortiGate 100E, 101E, 100EF and 140E-POE

**Next Generation Firewall
Secure SD-WAN**



The FortiGate 100E series delivers next-generation firewall capabilities for mid-sized to large enterprises, with the flexibility to be deployed at the campus or enterprise branch. Protect against cyber threats with security processor powered high performance, security efficacy and deep visibility.

Security

- Identifies thousands of applications inside network traffic for deep inspection and granular policy enforcement
- Protects against malware, exploits, and malicious websites in both encrypted and non-encrypted traffic
- Prevents and detects against known and unknown attacks using continuous threat intelligence from AI-powered FortiGuard Labs security services

Performance

- Delivers industry's best threat protection performance and ultra-low latency using purpose built-security processor (SPU) technology
- Provides industry-leading performance and protection for SSL encrypted traffic

Certification

- Independently tested and validated best security effectiveness and performance
- Received unparalleled third-party certifications from NSS Labs, ICSA, Virus Bulletin, and AV-Comparatives

Networking

- Best of Breed SD-WAN capabilities to enable application steering using WAN path control for high quality of experience
- Delivers advanced networking capabilities, high-performance, and scalable IPsec VPN capabilities to consolidate networking and security

Management

- Includes management console that's effective, simple to use, and provides comprehensive network automation & visibility.
- Provides Zero Touch Integration with Security Fabric's Single Pane of Glass Management
- Predefined compliance checklist analyzes the deployment and highlights best practices to improve overall security posture

Security Fabric

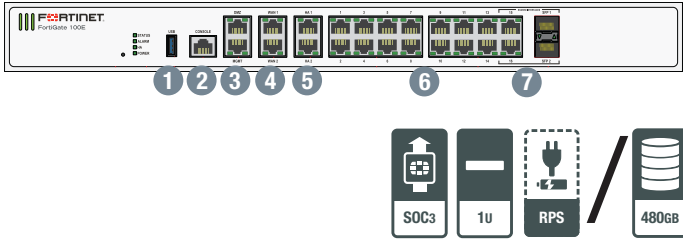
- Enables Fortinet and Fabric-ready partners' products to provide broader visibility, integrated end-to-end detection, threat intelligence sharing, and automated remediation
- Automatically builds Network Topology visualizations which discover IoT devices and provide complete visibility into Fortinet and Fabric-ready partner products

Firewall	IPS	NGFW	Threat Protection	Interfaces
7.4 Gbps	500 Mbps	360 Mbps	250 Mbps	Multiple GE RJ45, GE SFP Slots PoE/+ Variants

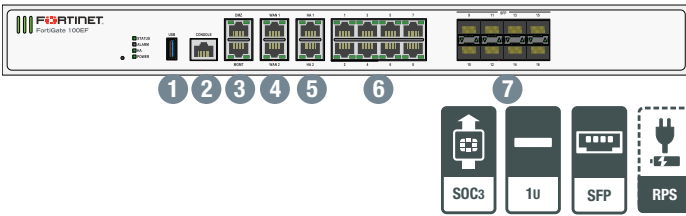
Refer to specification table for details

Hardware

FortiGate 100E/101E



FortiGate 100EF



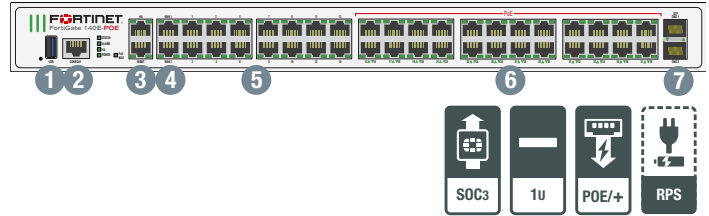
Interfaces

1. USB Port
2. Console Port
3. 2x GE RJ45 MGMT/DMZ Ports
4. 2x GE RJ45 WAN Ports
5. 2x GE RJ45 HA Ports
6. 8x GE RJ45 Ports
7. 8x GE SFP Slots

Interfaces

1. USB Port
2. Console Port
3. 2x GE RJ45 MGMT/DMZ Ports
4. 2x GE RJ45 WAN Ports
5. 2x GE RJ45 HA Ports
6. 14x GE RJ45 Ports
7. 2x GE RJ45/SFP Shared Media Pairs

FortiGate 140E-POE



Interfaces

1. USB Port
2. Console Port
3. 2x GE RJ45 MGMT/HA Ports
4. 2x GE RJ45 WAN Ports
5. 14x GE RJ45 Ports
6. 24x GE RJ45 POE Ports
7. 2x GE SFP DMZ Slots

Powered by SPU SoC3

- Combines a RISC-based CPU with Fortinet's proprietary Security Processing Unit (SPU) content and network processors for unmatched performance
- Simplifies appliance design and enables breakthrough performance for smaller networks
- Supports firewall acceleration across all packet sizes for maximum throughput
- Delivers accelerated UTM content processing for superior performance and protection
- Accelerates VPN performance for high speed, secure remote access



Redundant Power Supply

Power supply redundancy is essential in the operation of mission-critical networks. The FortiGate 100E Series offers the option to connect to an external redundant power supply appliance — The FortiRPS 100, designed to increase network availability and uptime.

Specifications

	FORTIGATE 100E	FORTIGATE 101E	FORTIGATE 100EF	FORTIGATE 140E-POE
Hardware Specifications				
GE RJ45 Ports	14	14	8	14
GE RJ45 Management/HA/DMZ Ports	1 / 2 / 1	1 / 2 / 1	1 / 2 / 1	1 / 1 / —
GE SFP Slots	—	—	8	2
GE RJ45 PoE/+ Ports	—	—	—	24
GE RJ45 WAN Ports	2	2	2	2
GE RJ45 or SFP Shared Ports	2	2	—	—
USB Port	1	1	1	1
Console Port	1	1	1	1
Internal Storage	—	1x 480 GB SSD	—	—
Included Transceivers	0	0	0	0
System Performance — Enterprise Traffic Mix				
IPS Throughput ²			500 Mbps	
NGFW Throughput ^{2,4}			360 Mbps	
Threat Protection Throughput ^{2,5}			250 Mbps	
System Performance				
Firewall Throughput (1518 / 512 / 64 byte UDP packets)			7.4 / 7.4 / 4.4 Gbps	
Firewall Latency (64 byte UDP packets)			3 µs	
Firewall Throughput (Packets Per Second)			6.6 Mpps	
Concurrent Sessions (TCP)			2 Million	
New Sessions/Second (TCP)			30,000	
Firewall Policies			10,000	
IPsec VPN Throughput (512 byte) ¹			4 Gbps	
Gateway-to-Gateway IPsec VPN Tunnels			2,000	
Client-to-Gateway IPsec VPN Tunnels			10,000	
SSL-VPN Throughput			250 Mbps	
Concurrent SSL-VPN Users (Recommended Maximum, Tunnel Mode)			500	
SSL Inspection Throughput (IPS, avg. HTTPS) ³			130 Mbps	
SSL Inspection CPS (IPS, avg. HTTPS) ³			130	
SSL Inspection Concurrent Session (IPS, avg. HTTPS) ³			125,000	
Application Control Throughput (HTTP 64K) ²			1 Gbps	
CAPWAP Throughput (1444 byte, UDP)			1.5 Gbps	
Virtual Domains (Default / Maximum)			10 / 10	
Maximum Number of FortiSwitches Supported			24	
Maximum Number of FortiAPs (Total / Tunnel Mode)			64 / 32	
Maximum Number of FortiTokens			5,000	
Maximum Number of Registered FortiClients			600	
High Availability Configurations			Active / Active, Active / Passive, Clustering	
Dimensions				
Height x Width x Length (inches)	1.75 x 17 x 10	1.75 x 17 x 10	1.75 x 17 x 10	1.75 x 17 x 15.5
Height x Width x Length (mm)	44.45 x 432 x 254	44.45 x 432 x 254	44.45 x 432 x 254	44.45 x 432 x 394
Form Factor	Rack Mount, 1 RU	Rack Mount, 1 RU	Rack Mount, 1 RU	Rack Mount, 1 RU
Weight	7.28 lbs (3.3 kg)	7.28 lbs (3.3 kg)	7.28 lbs (3.3 kg)	12.4 lbs (5.6 kg)
Environment				
Power Required			100–240V AC, 60–50 Hz	
Maximum Current	100V / 0.52A, 240V / 0.22A	100V / 0.59A, 240V / 0.25A	100V / 0.52A, 240V / 0.22A	100V / 5A
Total Available PoE Power Budget*	—	—	—	400 W
Power Consumption (Average / Maximum)	23.0 W / 28.6 W; 51.9 VA	24.8 W / 33.8 W; 59.2 VA	24.4 W / 28.6 W; 51.9 VA	477.1 W / 500.0 W
Heat Dissipation	97.6 BTU/h	115.3 BTU/h	97.6 BTU/h	1706.07 BTU/h

* Maximum loading on each PoE/+ port is 30 W (802.3at).

Note: All performance values are "up to" and vary depending on system configuration.

1. IPsec VPN performance test uses AES256-SHA256.

2. IPS (Enterprise Mix), Application Control, NGFW and Threat Protection are measured with Logging enabled.

3. SSL Inspection performance values use an average of HTTPS sessions of different cipher suites.

4. NGFW performance is measured with Firewall, IPS and Application Control enabled.

5. Threat Protection performance is measured with Firewall, IPS, Application Control and Malware Protection enabled.

Specifications

	FORTIGATE 100E	FORTIGATE 101E	FORTIGATE 100EF	FORTIGATE 140E-POE
Environment				
Operating Temperature		32–104°F (0–40°C)		
Storage Temperature		-31–158°F (-35–70°C)		
Operating Altitude		Up to 7,400 ft (2,250 m)		
Humidity		10–90% non-condensing		
Noise Level	40.4 dBA	40.4 dBA	40.4 dBA	57 dBA
Compliance		FCC Part 15B, Class A, CE, RCM, VCCI, UL/cUL, CB, BSMI		
Certifications		ICSA Labs: Firewall, IPsec, IPS, Antivirus, SSL-VPN; IPv6		

Order Information

Product	SKU	Description
FortiGate 100E	FG-100E	20x GE RJ45 ports (including 2x WAN ports, 1x DMZ port, 1x Mgmt port, 2x HA ports, 14x switch ports), 2x Shared Media pairs (including 2x GE RJ45 ports, 2x SFP slots). Maximum managed FortiAPs (Total / Tunnel) 64 / 32.
FortiGate 101E	FG-101E	20 x GE RJ45 ports (including 2x WAN ports, 1x DMZ port, 1x Mgmt port, 2x HA ports, 14x switch ports), 2x Shared Media pairs (including 2x GE RJ45 ports, 2x SFP slots) 480 GB onboard storage. Maximum managed FortiAPs (Total / Tunnel) 64 / 32.
FortiGate 100EF	FG-100EF	14x GE RJ45 ports (including 2x WAN ports, 1x DMZ port, 1x Mgmt port, 2x HA ports, 8x internal switch ports), 8x SFP ports. Maximum managed FortiAPs (Total / Tunnel) 64 / 32.
FortiGate 140E-POE	FG-140E-POE	42x GE RJ45 ports (including 2x WAN ports, 1x Mgmt port, 1x HA port, 24x RJ45 GE PoE/PoE+ ports, 14x switch ports), 2x GE SFP DMZ slots. Maximum managed FortiAPs (Total / Tunnel) 64 / 32.
Optional Accessories		
External redundant AC power supply	FRPS-100	External redundant AC power supply for up to 4 units: FG-100/101E, FG-300C, FG-310B, FS-348B and FS-448B. Up to 2 units: FG-200B, FG-200D, FG-200/201E, FG-240D and FG-300D, FG-400D, FG-500D, FG-600D, FHV-500D, FDD-200B, FDD-400B, FDD-600B and FDD-800B.
1 GE SFP LX transceiver module	FG-TRAN-LX	1 GE SFP LX transceiver module for all systems with SFP and SFP/SFP+ slots.
1 GE SFP RJ45 transceiver module	FG-TRAN-GC	1 GE SFP RJ45 transceiver module for all systems with SFP and SFP/SFP+ slots.
1 GE SFP SX transceiver module	FG-TRAN-SX	1 GE SFP SX transceiver module for all systems with SFP and SFP/SFP+ slots.

Bundles



FortiGuard Bundle

FortiGuard Labs delivers a number of security intelligence services to augment the FortiGate firewall platform. You can easily optimize the protection capabilities of your FortiGate with one of these FortiGuard Bundles.

Bundles	360 Protection	Enterprise Protection	UTM	Threat Protection
FortiCare	ASE ¹	24x7	24x7	24x7
FortiGuard App Control Service	•	•	•	•
FortiGuard IPS Service	•	•	•	•
FortiGuard Advanced Malware Protection (AMP) — Antivirus, Mobile Malware, Botnet, CDR, Virus Outbreak Protection and FortiSandbox Cloud Service	•	•	•	•
FortiGuard Web Filtering Service	•	•	•	•
FortiGuard Antispam Service	•	•	•	•
FortiGuard Security Rating Service	•	•	•	•
FortiGuard Industrial Service	•	•	•	•
FortiCASB SaaS-only Service	•	•	•	•
FortiConverter Service	•	•	•	•
SD-WAN Cloud Assisted Monitoring ²	•	•	•	•
SD-WAN Overlay Controller VPN Service ²	•	•	•	•
FortiAnalyzer Cloud ²	•	•	•	•
FortiManager Cloud ²	•	•	•	•

1. 24x7 plus Advanced Services Ticket Handling 2. Available when running FortiOS 6.2



www.fortinet.com

Copyright © 2019 Fortinet, Inc. All rights reserved. Fortinet®, FortiGate®, FortiCare® and FortiGuard®, and certain other marks are registered trademarks of Fortinet, Inc., and other Fortinet names herein may also be registered and/or common law trademarks of Fortinet. All other product or company names may be trademarks of their respective owners. Performance and other metrics contained herein were attained in internal lab tests under ideal conditions, and actual performance and other results may vary. Network variables, different network environments and other conditions may affect performance results. Nothing herein represents any binding commitment by Fortinet, and Fortinet disclaims all warranties, whether express or implied, except to the extent Fortinet enters a binding written contract, signed by Fortinet's General Counsel, with a purchaser that expressly warrants that the identified product will perform according to certain expressly-identified performance metrics and, in such event, only the specific performance metrics expressly identified in such binding written contract shall be binding on Fortinet. For absolute clarity, any such warranty will be limited to performance in the same ideal conditions as in Fortinet's internal lab tests. Fortinet disclaims in full any covenants, representations, and guarantees pursuant hereto, whether express or implied. Fortinet reserves the right to change, modify, transfer, or otherwise revise this publication without notice, and the most current version of the publication shall be applicable. Fortinet disclaims in full any covenants, representations, and guarantees pursuant hereto, whether express or implied. Fortinet reserves the right to change, modify, transfer, or otherwise revise this publication without notice, and the most current version of the publication shall be applicable.